

Little Squalicum Park: Located at the mouth of Little Squalicum Creek, access is from Marine drive parking area. All trails are off leash owned by the City and County. The beach is owned by the Port so watch for signs. The stream is currently undergoing tests for contamination. We share this area with bird watchers, the homeless and partygoers. Be respectful, careful and watch for broken glass. Garbage can near the beach. No dispenser.

Bloedel Donovan Park: Located on the West shore of Lake Whatcom off Electric Ave. This is the most beautiful partially fenced park (with a big goose problem). There is a big parking lot and lots of water access. In summer off leash use is limited to 6AM to 10AM before the park gets busy and to keep the geese away. Between Oct 15 and May 15 off-leash hours are extended.

BUSINESS OWNERS

DOG LOVERS IN BUSINESSES

Webster Illustration, Marketing & Graphic Design, Jean Webster
137 33rd Street
Bellingham, WA 98225
(360) 778-3211

**Becky Masters, LMP
Massage Associates**
Massage for Every Body!
1111 W. Holly Street
Bellingham, WA 98225
(360) 671-2713

Ross Architecture NW
Bob Ross
115 Underhill Rd.
Bellingham, WA 98225
(360) 676-4443

VETERINARIANS & ANIMAL HEALTH

Maplewood Animal Hospital
David Rabkin, D.V.M.
2869 West Maplewood Avenue
Bellingham, WA 98225
Office: (360) 715-1430

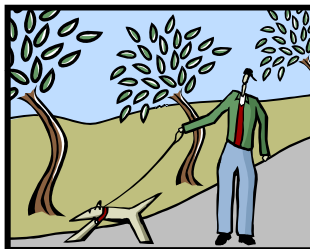
Whatcom Dog Rehabilitation
Barb Kennedy
*Behavioral Counselor and Rehabilitation
Specialist*
108 S 7th St
Lynden, WA 98264
(360) 739-8502

AN EXPERIENCE APT TO BE REPEATED

By *Gayle Larson*

The day following my visit to the off leash park in Blaine, a friend caught my smile as I relayed the experience. And what an experience it was!

As a first-timer to this convenient, safe and completely fenced in canine oasis, I was struck by how adorable it was, nestled in a natural setting of meadow and pond.



My best friend, "Chamois" was in pure doggie Heaven as she played endless fetch in the grassy areas, designated for both large and small dogs; and frolicked amongst the abundant evergreens.

Park goers can appreciate those trees, not only for their beauty, but for the shield they provide in rain or shine. Toys, balls, chairs and clean-up bags all rounded out a most pleasant play time.

This may have been our first visit, but it certainly won't be our last! I would recommend this park to any dog owner who wants to take the easy drive, or stop by when in the area.

Thank you,
Grateful Dogs Blaine. . . Well done!

Gayle Larson
Bellingham, WA

(To get there take 15 north, Exit at the truck route. Turn right on Boblett Street, then right again on Yew Ave. The dog park is in Skallman Park behind Blaine's Public Works Offices, located at 1200 Yew Ave.)

Tree Planting!

Saturday, Oct 18

9am to 12pm at

Squalicum Creek Park

Squalicum Parkway



Bring spades & gloves
Refreshments will be provided
Fun Times to be had by all!!

SPECIAL THANKS TO INDIVIDUALS!

We would like to thank the following generous contributors to our Tree Fund!

Mike & Barb Webb
Marly Hogan
Jenny Brighton
Lila Schacht
William & Carolyn McGown
Dorothy Gonsalves
Karl & Karen Mueller
Alta Stauffer
Jean Gorton
Helen and Jack Kurtz
Sharon Bishop
Sheila & Martin Nickerson
Kaye & Mollie Faulkner
David Syre
Ellen Broad
Kathy & James Hearne
Mary Hatch & Garrett Smith
Donna Gallant
Sara Purviance
Sharon Belk Krebs
Dale & Jane Jensen
Dorothea Leth
Dan and Dana Hanks
Coco Lomas

A PARK WITHOUT TREES? NO WAY!!!

By Mollie Faulkner



The new Squalicum Creek Park, on the north side of Bellingham, is the first park to be developed in many years.

The site was the home of a concrete and gravel business for many years. So the process of turning it into a useable park will take time.

The ball fields and trails are the Park Department's first priority. The 2.5 acres, designated for an off leash dog park is scheduled for development in 2010.



This year Grateful Dogs applied for and received a city grant and started to raise money to buy trees. Anara Thomas, Sharon Bishop and myself met with Jonathan Schilk the Parks Landscape Architect to develop a tree planting plan.

A variety of trees were selected to suit the site and give the best chance of survival. The planting plan provides trees to border the trails and give a green buffer for other parts of the park.

The consensus was to "buy local." So with our tree list in hand we checked out availability. Bakerview nursery had the most extensive stock and Travis, their tree manager, tracked down the rest of our list. So the trees are ordered and will be delivered to the site ready for our big planting day on October 18, 9-12 AM.

We still need to raise some money to cover the \$3500 we are spending from our treasury. Some of the trees will be fairly large so we need some strong help but there will also be plenty of small ones. There are 112 trees in total.

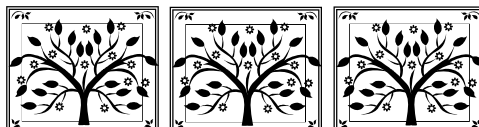
Rae Edwards the volunteer coordinator assures us that we can get them all planted in one morning. We will have refreshments available for all the volunteers.

Tree List:

- 2 Shore Pines
- 22 Douglas Firs
- 20 Western Red Cedar
- 2 Giant Sequoia
- 2 Dawn Redwoods
- 20 Red Alder
- 5 Golden Raindrop Crabapples
- 10 Vine Maples
- 1 European Beech
- 3 Scarlet Oak
- 5 Red Oak
- 4 Garry Oak,
- 1 White Birch
- 2 London Plane Trees and
- 1 Golden Weeping Willow.

Please help in whatever way you can, digging holes, providing money or refreshments.

Please leave your puppies home on Planting Day!



BELLINGHAM OFF LEASH AREAS

- For a complete listing and directions visit our website www.gratefuldogs.org.
-
- **Arroyo Park:** The trails within Arroyo Park are off-leash; those outside the park are not. Be aware of bicycle traffic. Arroyo Park can be reached by following Chuckanut Dr. South take a left on Old Samish Hwy. just past the Chuckanut Bay Gallery.
- **Lake Padden Park:** Follow the signs along Samish Way to Lake Padden. The east entrance will lead you past the picnic areas and baseball fields. To the left is Bellingham's only fenced off leash area. There are two & a half acres of freedom for your dogs to run to their hearts content. Also a special fenced section for small dogs under 30 lbs. please follow the rules.
- **Sunset Pond and Bug Lake:** Often known as the K-mart puddle. Sunset Pond offers dogs easy water access. Located behind Sunset Square on James Street.
- **Whatcom Falls Park:** Last year the trails north of the bridge have been closed to off leash dogs after many wonderful years of use. Now the only segment of trail open is the Waterline Trail. Access is from Lakeway Dr. into the park past the water treatment plant or inside the main gate of the cemetery.
- **Post Point Treatment Area:** Located on the grounds of Bellingham Waste Water Treatment Facility. Directions: Follow Harris St. through Fairhaven turn left on 4th & right on McKenzie. There are two large fields (including Bowser's Bowl). The trails are connected with the interurban trail system found throughout the city. Use designated parking on McKenzie and there is limited parking on 4th Street. Public works is about to lay a new pipe out into the bay so the lower trail will be blocked. They plan to plant new Eel Grass in the lagoon and close it to dogs and their owners for at least two years. We are presently fighting this and will keep you posted.
- **Sehome Hill Arboretum:** 165 acres of woodland overlooking the city. Located off the Bill McDonald Parkway at the intersection with 25th Street, across from the Washington Archives building. (The sign at the entrance is concealed.) Bear right up the hill for .8 of a mile. Open 6 AM to dusk Parking available. On leash for the main trails, off leash for the secondary trails only. Bicycles and horses prohibited. Warning cougars have been reported on occasion, so be alert. No dispenser, garbage cans in the parking area.